

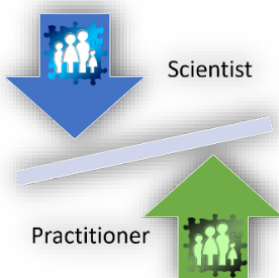


POWERED BY THE MINDS AT CHILD DEVELOPMENT INSTITUTE

## RESEARCH BRIEF

**SNAP® (Stop Now And Plan)** is an evidence-based, gender sensitive, cognitive behavioural, multi-component and family-focused program developed in 1985 at Child Development Institute (CDI; formerly Earlscourt Child and Family Centre) in Toronto, Canada. It was initially started in conjunction with the Toronto Police Service with support from the Ontario Government to meet a service gap for young children in conflict with the law as a result of the Canadian Government raising the age of criminal responsibility from seven to twelve (1984). Today, SNAP is a children's mental health model designed specifically for children at risk for engaging in antisocial activities and/or experiencing disruptive behaviour problems at home, school, and in the community. For the past decade, SNAP has also worked at ensuring the model is culturally responsive and safe (in particular for Indigenous and Black and African Canadian children, families and communities). Evaluation of the SNAP model is a continuous process, and as part of SNAP's scientist-practitioner framework, research to inform and improve SNAP is an integral part of the model enhancement process and development.

### The Scientist-Practitioner Model



The SNAP model utilizes a scientist-practitioner framework, which emphasizes the integration of science and practice in clinical programs. In essence, this means that research should directly inform and improve the clinical program in ways that are realistic and helpful, while also drawing on the experiences of clinicians to influence the course of research (Jones & Mehr, 2007). Thus, much of the research produced by CDI and licensed SNAP affiliate sites aim to either evaluate the effectiveness of SNAP, or make their implementation more efficient.

### Historic Research – Evaluating the SNAP Program

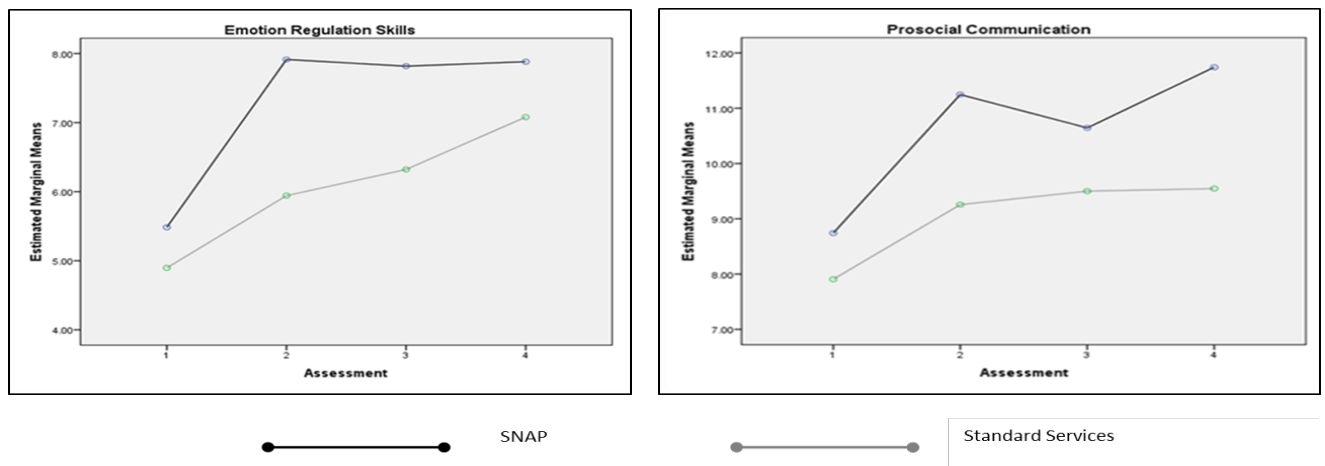
CDI has initiated several studies evaluating the effectiveness of SNAP. The first randomized controlled trial of SNAP revealed significantly reduced scores of both delinquent, externalizing, and internalizing behaviour, as measured by the Child Behavior Checklist (CBCL; ASEBA), as well as improved child-parent relationship in children after completing SNAP compared to a control group. Crucially, the positive effects of the SNAP program were maintained at a 15-month follow-up (Day & Augimeri, 1996). Another randomized controlled trial further found significant

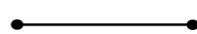
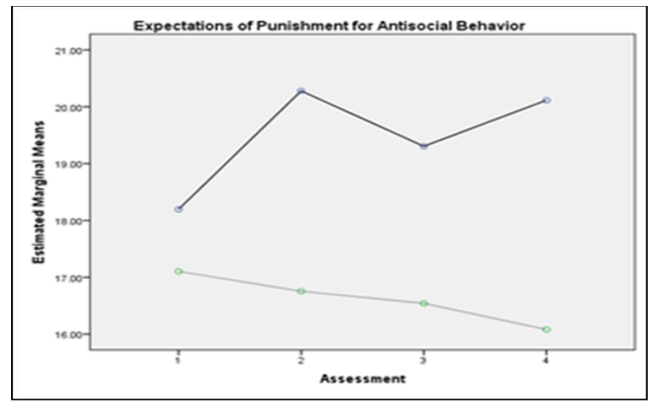
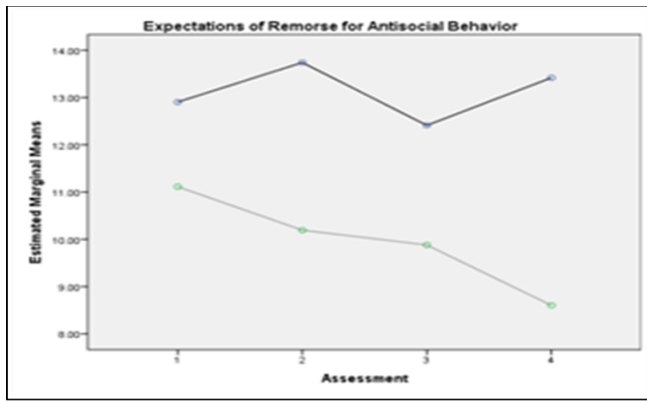
reductions in the girl’s aggression, rule-breaking, and conduct problems, as well as internalizing problems (measured by the CBCL), and relationship quality with parents (Pepler et al., 2010) – demonstrating that the SNAP Girls program effectiveness.

The largest 3<sup>rd</sup> party SNAP randomized controlled trial (RCT) was conducted at the University Pittsburgh by Burke & Loeber (2015). This study found that SNAP significantly reduced aggression, conduct problems, rule-breaking, and overall externalizing behaviour, depression and anxiety (as measured by the Child Behavior Checklist) and outperformed treatment as usual. In addition, SNAP reduced symptoms of oppositional defiant disorder (ODD) and attention deficit hyperactivity disorder (ADHD). Notably, treatment gains were maintained one year later.



In a follow-up study from the same team, the researchers analyzed the mechanisms that led to the behavioural changes. Burke & Loeber (2016) found that SNAP treatment condition saw improvements in problem solving skills, prosocial behaviour, emotion regulation, and reduced parenting stress associated with difficult child behaviour – all of which predicted improvements on aggression. They also found that emotion regulation skills also predicted improvements in anxious/depressed outcomes for the SNAP children.





SNAP



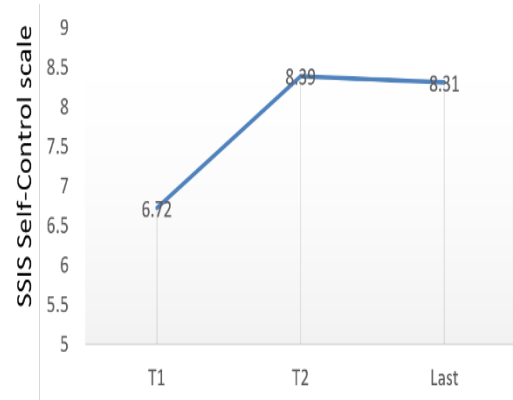
Standard Services

SNAP affiliate sites in Ontario and the US have reported similar decreases in rule-breaking, aggression, and conduct problems, along with increased social skills and emotion regulation in children completing the SNAP program (e.g., Lipman et al., 2008; SNAP Pittsburgh Steering Committee, 2011).

Several studies have also focused specifically on girls, and the evaluation of the SNAP Girls program. The first of this kind included all girls that had participated in the program since its inception in 1996 through to 2000. The study found significant decreases in externalizing behaviour and improved social skills between admission and follow-up at 6 and 12 months (Walsh et al., 2002). The authors noted that girls who remained in the clinical range after completing the program had higher scores on externalizing scales and higher co-morbidity, which highlights the need to address these complex interactions in treatment planning (Walsh et al., 2002).

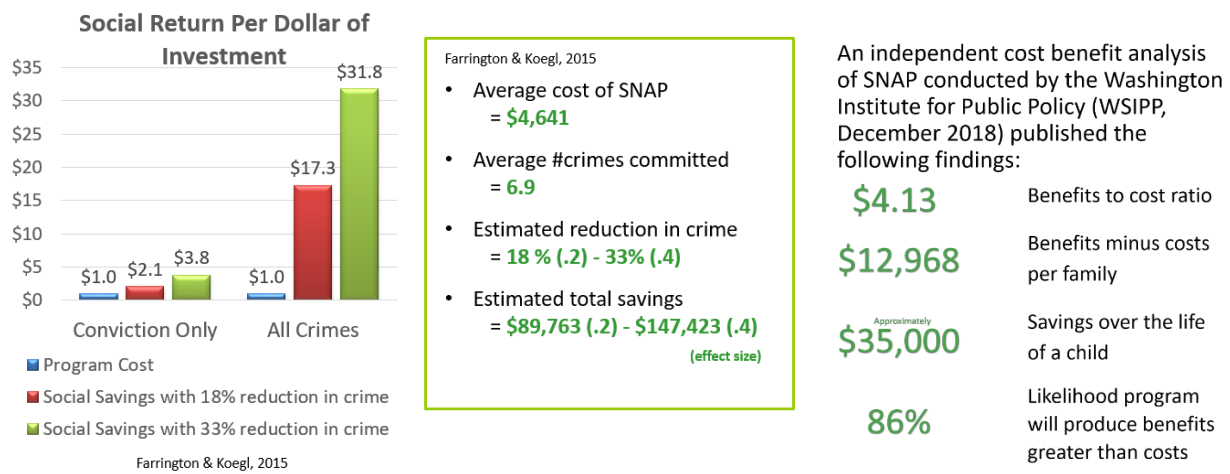
Qualitative evaluations of the program has also been conducted. From interviews with 35 families, one study found that parents reported improvements in parenting skills and communication with their child, as well as overall improvements in the family relations (Lipman et al., 2011), clearly demonstrating the importance of including the parenting component of SNAP.

Furthermore, a recent study found significant increases in self-control (as measured by the Social Skills Improvement System, SSIS) in both boys and girls from the start of the program (T1) to six months later (T2), and these benefits were maintained at the last time point, approximately one year later (Augimeri et al., 2018). Another analyses (Walsh et al., 2018) that looked at SNAP boys and girls CBCL Scores split into race – White, Bi-Racial/Black, Other, and Not Identified (N=599; 2001-2013), children in all four race categories significantly improved in scores of rule-breaking, aggression, and externalizing scores.



To ascertain long-term benefits of the program, Augimeri et al. (2007) searched available criminal records for the participants in the original study and noted that number of criminal offences (obtained up to age 18) were almost halved for the children taking part in SNAP, relative to a less intensive treatment. In the most recent long-term follow-up [3<sup>rd</sup> wave of criminal outcome data; (N=551; boys N=276; girls N=275) SNAP graduates aged 12+ involved in treatment from 2001-2009), Donato and colleagues (2015) found that approximately **68% of the SNAP children will not have any criminal justice contact** by age 20.5. It was also found that more boys 21.7% (N=60) versus 9.1% of girls (N=25) had involvement with the criminal justice system. To put the above into perspective, typically research has found up to, 75% of children engaged in antisocial and/or delinquency are likely to continue on a serious violent and chronic pathway. The findings from these studies clearly demonstrates the positive long-term effects of early intervention with SNAP. To further this point, an instrumental study by Farrington & Koegl (2015) showed that SNAP is estimated to save on average between \$17-32 for every \$1 spent and reduce crime by up to 33% (linked to an effect size of .4), emphasizing the lasting benefits of the program. These findings were further supported when Washington Institute for Public Policy (WSIPP) did an independent cost benefit analysis on SNAP that was issued in December 2018.

### SNAP Cost Benefit Analysis:



### Summary of SNAP Key Findings:



- Emotion regulation
- Self-control
- Problem-solving skills
- Pro-social communication
- Executive functioning
- Social competency
- School success



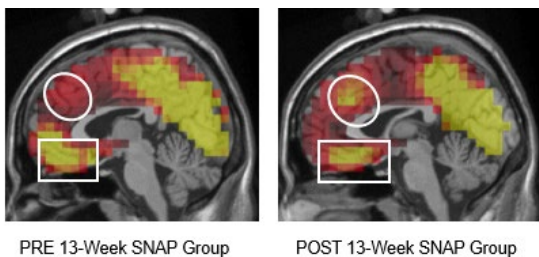
- Antisocial behaviour
- Rule breaking
- Depression
- Anxiety
- Police contact
- Disciplinary issues at school
- Parental distress

## Putting the Scientist-practitioner Model into Practice

Many studies have been directly helpful in informing the SNAP program. For example, it is well established that the program effectively reduces delinquency and aggression, Koegl and colleagues investigated whether the success of treatment differed by age or gender. They found that although improvements were seen across the board, girls, and older boys benefitted more from additional individual sessions compared to younger boys (Koegl et al., 2008).

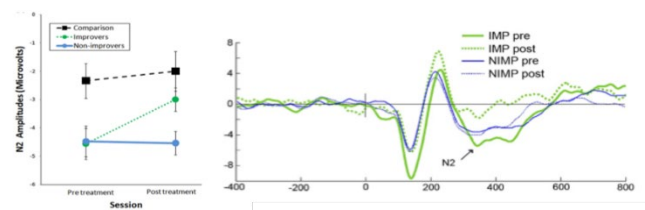


Other studies have focused on mediating factors that facilitates reductions in aggression and externalizing behaviour. For example, improved parent-child relationship was a significant predictor of improvements in externalizing behaviour (Granic et al., 2007). Similarly, significant increases in self-control was found to be a strong mediator in reducing externalizing behaviour in both boys and girls (Augimeri et al., 2018). These studies are invaluable, as they may directly inform the SNAP model to strengthen certain aspects of the program.



## SNAP and Neuroscience

The first studies to investigate biological markers of SNAP treatment success used electroencephalography (EEG) to measure prefrontal brain activation in children whose clinical scores improved, versus not improved, following completion of SNAP (and relative to a healthy control group). The authors found that all children taking part in SNAP had heightened activity in areas involved in emotion regulation at pre-treatment assessment. However, the children who displayed clinical improvement in externalizing scores at post-assessment had reduced brain activity, showing brain activity that was more similar to the healthy children (Lewis et al., 2008; Woltering et al., 2011). An additional study using these methods found that, specifically, theta-band brain activity was associated with improved self-regulation up to 12 months post-SNAP treatment (Woltering et al., 2015).



A recent study using magnetic resonance imaging (MRI) to investigate whether brain activation pre-SNAP treatment reliably predicted clinical improvement following SNAP (Byrd et al., 2018). While such an association was not found, it poses the question of whether we would see brain differences in these measures using a pre-post SNAP design, such as used in previously described EEG studies.

## Current Research Projects

The SNAP research team at CDI is currently working on a number of studies, including investigating the effects of co-morbidity in treatment planning, and exploring whether there may be distinct subgroups of children, based on their symptom presentation (Smaragdi et al., in process). Data is also currently being collected for a study led by researchers at the Centre of Addiction and Mental Health (CAMH) in Toronto (Kolla et al., in process). This project uses MRI to delineate if structural and functional brain changes accompanies the reduction in clinical scores in children taking part in SNAP, and if these differences are able to predict which children is most likely to benefit from SNAP. In addition, the SNAP research team conduct ongoing evaluation analysis and regular summaries that can be provided upon request (please contact Dr. Leena Augimeri).

## Future Research Projects

An increasing amount of research is devoted to finding biological markers of disruptive and antisocial behaviour. The SNAP team recognizes that for the program to be as effective as possible, we need to understand the biology behind the behaviours that we see, and the damaging emotional and cognitive patterns that we aim to change. Thus, as SNAP continues to gain momentum, collaborations with external research institutions that have the ability to measure neurobiological, endocrinological, and psychophysiological markers of treatment success will be implemented. Ongoing collaborations with leading research institutions such as the Hospital for Sick Children and CAMH in Toronto, as well as universities in the US and further afield, will be expanded and build upon to achieve this goal.

## SNAP National Expansion

SNAP is currently engaged in a multi-year implementation strategy developed in 2013 (Phase 1 ending in 2022) when SNAP was selected by the LEAP|Pecaut Centre for Social Impact as their inaugural social innovation to scale across Canada. This strategy introduces a very unique model to Canada's children's mental health landscape - **Venture Philanthropy**, that brings together government, foundations, business, individual donors and community partners to scale up effective social innovations like SNAP to help create massive social change. It will enable

SNAP to scale up from helping 700 children a year to approximately 7000 children a year across Canada. Currently SNAP is only reaching 5% of children with identified needs and the new strategy will increase the reach by 40%; potentially saving the Canadian society **over \$1 billion** (e.g., mental health, health and criminal justice costs). This strategy includes the infusion of business skills and planning, in order to build capacity and fidelity, and sustainable growth across Canada (Augimeri et al., 2017).



As a result of this large scale national implementation, a SNAP implementation and data system (SNAP Implementation Tool; SNAPiT) was created for use by SNAP Headquarters at CDI and SNAP Affiliates to track SNAP operations, case management, outcomes and fidelity monitoring activities. This system will be instrumental in assisting external evaluators and the SNAP Implementation & Research Team with evaluation activities that will also contribute to the field of implementation science on scaling evidence-based programs like SNAP with high integrity and fidelity.

*\*Please see attached for SNAP references*


### **SNAP Designations: Samples**

- **Washington State Institute for Public Policy** (WSIPP, 2019; [www.wsipp.wa.gov/BenefitCost/ProgramPdf/615/Stop-Now-and-Plan-SNAP](http://www.wsipp.wa.gov/BenefitCost/ProgramPdf/615/Stop-Now-and-Plan-SNAP))
  - Designation: Evidence-Based
  - High Net Value in its category: Children’s Mental Health (subcategory Disruptive Behaviour – 86%)
- **Crime Solutions** ([www.crimesolutions.gov/ProgramDetails.aspx?ID=231](http://www.crimesolutions.gov/ProgramDetails.aspx?ID=231))
  - Designation: Effective + (more than one study)
- **National Gang Center** ([www.nationalgangcenter.gov/SPT/Programs/129](http://www.nationalgangcenter.gov/SPT/Programs/129))
  - Designation: Effective
- **Office of Juvenile Justice & Delinquency Prevention** (OJJDP: Model Program Guide; [www.ojjdp.gov/mpg/Topic/Details/79](http://www.ojjdp.gov/mpg/Topic/Details/79))
  - Effective+ (linked to Crime Solutions)
- **Public Safety Canada: Crime Prevention Inventory**
  - [www.publicsafety.gc.ca/cnt/cntrng-crm/crm-prvntn/nvnr/dtls-en.aspx?i=10149](http://www.publicsafety.gc.ca/cnt/cntrng-crm/crm-prvntn/nvnr/dtls-en.aspx?i=10149)
  - [www.publicsafety.gc.ca/cnt/cntrng-crm/crm-prvntn/nvnr/dtls-en.aspx?i=10054](http://www.publicsafety.gc.ca/cnt/cntrng-crm/crm-prvntn/nvnr/dtls-en.aspx?i=10054)
- **Public Health Agency of Canada** (Canadian Best Practices Portal; [www.cbpp-pcpe.phac-aspc.gc.ca/interventions/snap-stop-now-and-plan-model-programs](http://www.cbpp-pcpe.phac-aspc.gc.ca/interventions/snap-stop-now-and-plan-model-programs))

---

### **CONTACT:**

Dr. Leena K. Augimeri  
Director, SNAP® Scientific & Program Development  
& National / International Expansion  
Child Development Institute  
46 St. Clair Gardens, Toronto, ON, M6E 3V4 CANADA

**E.** [laugimeri@childdevelop.ca](mailto:laugimeri@childdevelop.ca)  
**M.** 416-576-1867  
**W.** [stopnowandplan.com](http://stopnowandplan.com)  
 @LeenaAugimeri  
@SNAP\_CDI

August 2, 2019

## PUBLICATION BIBLIOGRAPHY

### SNAP® (Stop Now And Plan), EARL-20B & 21G (Early Assessment Risk Lists for Boys and Girls) & Centre for Children Committing Offences (CCCO)

<b>LEGEND</b>	Published by CDI staff
	3 <sup>rd</sup> party publications by other professionals outside of CDI

- ❑ Augimeri, L.K. (under review). Chapter 25: Early assessment of risks and their amelioration by Stop Now And Plan® (SNAP) programmes: national and international research. D. Eaves, C. D. Webster, Q. Haque and J. Thalken-Eaves (Eds.), *Structured Professional Judgment of Violence Risks: A Practical Introduction*. Pavilion Publishing and Media Ltd.
  
- ❑ Zanette, S., Walsh, M., Augimeri, L., & Lee, K. (under review). Differences and similarities in lying frequency, moral judgements, and beliefs about lying among children with and without conduct problems. *Journal of Experimental Child Psychology*.
  
- ❑ [Washington State Institute for Public Policy. \(2018\). Updated Inventory of Evidence-Based, Research-Based, and Promising Practices: For Prevention and Intervention Services for Children and Juveniles in the Child Welfare, Juvenile Justice, and Mental Health Systems. Seattle, WA: Washington State Institute for Public Policy.](#)
  
- ❑ Augimeri, L.K., Rajca, E., Verpoort, M., Blackman, A., Walsh, M. (2019). Using a trauma informed lens to understand and implement evidence-based practices with children experiencing disruptive behavior in school and beyond. C. Bennell & J. Pozzulo (Eds.), *Working with Trauma-Exposed Children and Adolescents: Evidence-Based and Age-Appropriate Practices* (pp. 183-215). New York, NY: Routledge/Taylor and Francis.
  
- ❑ Adapting the SNAP Program for use in the African Canadian Community – Report 1: Research Report (2018). Co-created/developed Turner Consulting Group and SNAP at Child Development Institute, Toronto, ON.
  
- ❑ Adapting the SNAP Program for use in the African Canadian Community – Report 2: Companion Guide (2018). Co-created/developed Turner Consulting Group and SNAP at Child Development Institute, Toronto, ON.
  
- ❑ [Byrd, A.I., Hawes, S.W., Burke, J.D., Loeber, R., & Pardini, D.A., \(2018\). Boys with conduct problems and callous-unemotional traits: Neural responses to reward and punishment and associations with treatment response. \*Developmental Cognitive Neuroscience\*, 30, 51-59.](#)
  
- ❑ Augimeri, L. K., Walsh, M., Donato, A., Blackman, A., & Piquero, A. R. (2018). SNAP (Stop Now And Plan): Helping children improve their self-control and externalizing behavior problems. Special Issue - *Advances*



in Research on Self-Control, *Journal of Criminal Justice*, 56, 43-49. [Printed online, November 2017, DOI: 10.1016/j.jcrimjus.2017.08.010]

- ❑ Augimeri, L. K., Walsh, M., Enebrink, P., Jiang, D., Blackman, A., & Kanter, D. (under review). Gender-specific childhood risk assessment tools: Early Assessment Risk Lists for Boys (EARL-20B) and Girls (EARL-21G). In R. K. Otto & K. S. Douglas (Eds.), *Handbook of violence risk assessment*, 2<sup>nd</sup> edition. Oxford, UK: Routledge, Taylor & Francis.
- ❑ Augimeri, L.K., Pepler, D., Walsh, M., & Kivlenieks, M. (2017). Addressing Children’s Disruptive Behavior Problems: A Thirty-Year Journey with SNAP (Stop Now And Plan). In P. Sturmey (Ed.), *Handbook of Violence and Aggression, Volume 2: Assessment, Prevention, and Treatment of Individuals*. U.S.: Wiley-Blackwell.
- ❑ Scott, S., Augimeri, L.K., & Fifield, J. (2017). Treatment and management: Early interventions in conduct disorder and oppositional defiant disorder. In Susan Bailey and Paul Tarbuck (Eds.), *Forensic Child and Adolescent Mental Health: Meeting the Needs of Young Offenders*. Cambridge University Press.
- ❑ Burke, J. & Loeber, R. (2016). Mechanisms of behavioral and affective treatment outcomes in a cognitive behavioral intervention for boys. *Journal of Abnormal Child Psychology*, 44(1):179-189. [Printed online, January 27, 2015, DOI: 10.1007/s10802-015-9975-0]
- ❑ Stern, S. B., Walsh, M., Mercado, M., Levene, K., Pepler, D. J., Carr, A., Heppell, A., and Lowe, E. (2015). When they call, will they come? A contextually responsive approach for engaging multistressed families in an urban child mental health center: A randomized clinical trial. *Research on Social Work Practice*, 25(5): 549–563..
- ❑ Woltering, S., Liao, V., Liu, Z-X., & Granic, I. (2015). Neural Rhythms of Change: Long-Term Improvement after Successful Treatment in Children with Disruptive Behavior Problems. *Neural Plasticity*, Article ID 873197; <http://dx.doi.org/10.1155/2015/873197>, [Hindawi Publishing Corporation].
- ❑ Augimeri, L.K., Walsh, M., Levene, K., & Slater, N. (2015). Scaling Deeper: SNAP® Model and Implementation Frameworks. In Raymond Corrado, Alan Leschied, Patrick Lussier, & John Watley (Eds), *Serious and Violent Young Offenders and Youth Criminal Justice: A Canadian perspective*. Simon Fraser University Press.
- ❑ Farrington, D. P. & Koegl, C. J. (2015). Monetary benefits and costs of the Stop Now And Plan program for boys aged 6-11, based on the prevention of later offending. *Journal of Quantitative Criminology*, 31, 263–287, DOI 10.1007/s10940-014-9240-7 [Published online: 22 November 2014\_ Springer Science+Business Media New York 2014]
- ❑ Burke, J., & Loeber, R. (2015). The effectiveness of the Stop Now and Plan (SNAP) Program for boys at risk for violence and delinquency. *Prevention Science*, 16 (2): 242-253. [Printed online, April 24, 2014, DOI 10.1007/s11121-014-0490-2]

SNAP Headquarters at Child Development Institute

46 St. Clair Gardens, Toronto, ON M6E 3V4 T 416.603-1827 x 3112 F 416.654-8996

Contact: Dr. Leena Augimeri, Director, Scientific and Program Development & Centre for Children Committing Offences

E [augimeri@childdevelop.ca](mailto:augimeri@childdevelop.ca) W [www.stopnowandplan.com](http://www.stopnowandplan.com) or [www.childdevelop.ca](http://www.childdevelop.ca)

- ❑ Webster, C., Haque, Q., Augimeri, L., Brink, J., Cree, A., Desmarais, S., Gray, N., Johnstone, L., Martin, M., Nicholls, T., & Snowden, R. (2014). Teaching and researching SPJ guides. In C. D. Webster, Q. Haque and S. J. Hucker (Eds.), *Violence Risk-Assessment and Management: Advances Through Structured Professional Judgement and Sequential Redirections*, Second Edition (pp. 123-137). West Sussex, UK: John Wiley & Sons, Ltd.
- ❑ Augimeri, L.K., Walsh, M., Levene, K., Sewell, K., & Rajca, E. (2014). Stop Now And Plan (SNAP) Model. *Encyclopedia of Criminology and Criminal Justice*, 5053-5063. New York, NY: Springer Science – Business Media.
- ❑ Augimeri, L. & Walsh, M. (2013). School- Based Interventions: Commentary. In D. Pepler & B. Ferguson (Eds.), *Understanding and Addressing Girls’ Aggressive Behaviour Problems (A Focus on Relationships)*. Waterloo, ON: Wilfred Laurier University Press.
- ❑ SNAP® Companion Manual for Aboriginal Communities: Starting your community’s journey with SNAP®. (2013) Toronto, ON: Child Development Institute.
- ❑ Augimeri, L.K., Walsh, M., Jiang, D., & Woods, S. (2012). Risk assessment and clinical risk management for young antisocial children: The forgotten group. *Universitas Psychologica*, 11(4), 1147-1156.
- ❑ Augimeri, L.K., & Koegl, C. (2012). Raising the bar: Transforming knowledge to practice for children in conflict with the law. In R. Loeber and B.C. Welsh (Eds.), *The Future of Criminology* (pp.204-210). New York, NY: Oxford University Press.
- ❑ de Ruiter, Corine, & Augimeri, L. K. (2012). Making delinquency prevention work with children and adolescents: From risk assessment to effective interventions. In C. Logan and L. Johnstone (Eds), *Managing Clinical Risk: A Guide to Effective Practice* (pp.199-223). London: Routledge.
- ❑ Augimeri, L.K., & Walsh, M. (2011). *Early Assessment Risk List – Pre Checklist (EARL-PC) Final Evaluation Report*. Ontario Ministry of Community Safety and Correctional Services, Safer and Vital Communities Grant.
- ❑ [SNAP-Pittsburgh Steering Committee \(2011\). SNAP Pittsburgh - Report of a Two-Year Demonstration of SNAP. Unpublished report, Pittsburgh, PA: SNAP-Pittsburgh Steering Committee.](#)
- ❑ [Woltering, S. Granic, I. Lamm C. & Lewis, MD. \(2011\). Neural Changes Associated with Treatment Outcome in Children with Externalizing Problems. Biological Psychiatry, 70 \(9\), 873-879.](#)
- ❑ Lipman, E.L., Kenny, M., Brennan, E., O’Grady, S., & Augimeri, L. (2011). Helping boys at-risk of criminal activity: Qualitative results of a multi-component intervention. *BMC Public Health*, 11:364. <http://www.biomedcentral.com/1471-2458/11/364>.
- ❑ Rubin-Vaughan, A., Pepler, D, Walsh, M., Levene, K., & Yuile, A. (2011). Risk for Girls’ Delinquency: Early Intervention to Promote Healthy Development. In S. Miller, L. D. Leve, & P. K. Kerig (Eds.), *Delinquent Girls: Contexts, Relationships, and Adaptation*. New York: Springer.

SNAP Headquarters at Child Development Institute

46 St. Clair Gardens, Toronto, ON M6E 3V4 T 416.603-1827 x 3112 F 416.654-8996

Contact: Dr. Leena Augimeri, Director, Scientific and Program Development & Centre for Children Committing Offences

E [augimeri@childdevelop.ca](mailto:augimeri@childdevelop.ca) W [www.stopnowandplan.com](http://www.stopnowandplan.com) or [www.childdevelop.ca](http://www.childdevelop.ca)

- ❑ Augimeri, L.K., Walsh, M., & Slater, N. (2011). Rolling out SNAP® an evidence-based intervention: A summary of implementation, evaluation and research. *International Journal of Child, Youth and Family Studies*, 2.1: 330-352.
- ❑ Jiang, D., Walsh, M., & Augimeri, L. K. (2011). The linkage between bullying behaviour and future offending. *Criminal Behaviour and Mental Health*, 21: 128 – 135. Published online, March 8, 2011. DOI: 10.1002/cbm.803.
- ❑ Koegl, C.J. (2011). High-risk antisocial children: Predicting future criminal and health outcomes. Unpublished doctoral dissertation, University of Cambridge.
- ❑ Augimeri, L.K., Walsh, M.M, Liddon, A.D., & Dassinger, C. R. (2011). From risk identification to risk management: A comprehensive strategy for young children engaged in antisocial behavior. In D. W. Springer and A. Roberts, (Eds), *Juvenile Justice and Delinquency* (pp. 117 – 140). United States: Jones & Bartlett.
- ❑ Augimeri, L.K., & Walsh, M. (March 2011). Early Assessment Risk List – Pre Checklist (EARL-PC). Program Evaluation Report submitted to Ontario Ministry of Community Safety and Correctional Services, under a Safer and Vital Communities Grant.
- ❑ Augimeri, L.K., Pepler, D., Walsh, M.M., Jiang, D., & Dassinger, C. (2010). Aggressive and antisocial young children: Risk prediction, assessment and clinical risk management. Program Evaluation Report submitted to The Provincial Centre of Excellence for Child and Youth Mental Health at CHEO (Grant: # RG-976).
- ❑ Pepler, D., Walsh, M., Yuile, A., Levene, K., Vaughan, A. & Webber, J. (2010). Bridging the Gender Gap: Interventions with Aggressive Girls and Their Parents. *Prevention Science* 11: 229-238. Published online, 27 January 2010. DOI: 10.1007/s11121-009-0167-4.
- ❑ Augimeri, L. K., Enebrink, P., Walsh, M., & Jiang, D. (2010). Gender-specific childhood risk assessment tools: Early Assessment Risk Lists for Boys (EARL-20B) and Girls (EARL-21G). In R. K. Otto & K. S. Douglas (Eds.), *Handbook of violence risk assessment* (pp. 43-62). Oxford, UK: Routledge, Taylor & Francis.
- ❑ Levene, K. (2010). *SNAPP Stop-now-and-plan-parenting: Parenting children with behaviour problems*. Toronto, ON: Child Development Institute.
- ❑ Webster, C. D, Bloom, H., & Augimeri, L. (2009). Violence risk assessment in everyday psychiatric practice: Twelve principles help guide clinicians. *Psychiatric Times*; 26 (12) (pp. 40-43).
- ❑ Vaughan, A., Levene, K., Walsh, M., & Pepler, D. (2009). Gender-Sensitive SNAP® Programs: How do boys, girls, and their parents' fare? In D. Pepler, W. Craig, & J. Cummings (Eds.), *Rise Up for Respectful Relationships: Prevent Bullying*, PREVNet Series, Volume 2. Bloomington, IN: Author House.

SNAP Headquarters at Child Development Institute

46 St. Clair Gardens, Toronto, ON M6E 3V4 T 416.603-1827 x 3112 F 416.654-8996

Contact: Dr. Leena Augimeri, Director, Scientific and Program Development & Centre for Children Committing Offences

E [laugimeri@childdevelop.ca](mailto:laugimeri@childdevelop.ca) W [www.stopnowandplan.com](http://www.stopnowandplan.com) or [www.childdevelop.ca](http://www.childdevelop.ca)

- ❑ Garbarino, J., Levene, K., Walsh, M., & Coupet, S.M. (2009). Girl Offenders: Special Issues. In B. L. Bottoms, C. J. Najdowski, and G.S. Goodman, (Eds), In Children as Victims, Witnesses, and Offenders: Psychological Science and the Law. New York, NY: Guilford Press.
- ❑ Koegl, C. J., Farrington, D.P., & Augimeri, L.K. (2009). Clinical perceptions of childhood risk factors for future antisocial behavior. *Journal of Clinical Child & Adolescent Psychology*, 38 (4), 564- 575.
- ❑ Stern, S.B., Webber, J.A., & Augimeri, L.K. (2009). Ecological and evidence-based family interventions for juvenile justice practitioners. In J.T. Andrade (Ed), *Handbook of Violence Risk Assessment and Treatment New Approaches for Forensic Mental Health Professionals* (pp. 601-637). New York, NY: Springer Publishing Company.
- ❑ Augimeri, L.K., Desmarais, S.L., Koegl, C.J., Jiang, D., & Webster, C.D. (2009). Assessing risk for antisocial conduct among young children: Psychometric properties of the Early Assessment Risk List for Boys (EARL-20B). Unpublished manuscript.
- ❑ Lewis, M.D., Granic, I., Lamm, C., Zelazo, P.D., Stieben, J. Todd, R.M., Moadab, I., & Pepler, D. (2008). Changes in the neural bases of emotion regulation associate with clinical improvement in children with behaviour problems. *Development and Psychopathology*, 20, 913–939.
- ❑ Bardick, A.D. & Bernes, K.B. (2008). A framework for assessing violent behaviors in elementary school-aged children. *Children & Schools*, 30 (2), 83-91.
- ❑ Koegl, C.J., Augimeri, L.K., Ferrante, P., Walsh, M., & Slater, N. (2008). A Canadian programme for child delinquents. In R. Loeber, N. W. Slot, P. van der Laan, and M. Hoeve, (Eds), *Tomorrow's criminals: The development of child delinquency and effective interventions*, (pp. 285 – 300). Aldershot: Ashgate.
- ❑ Koegl, C. J., Farrington, D. P., Augimeri, L. K., & Day, D. M. (2008). Evaluation of a targeted cognitive-behavioural programme for children with conduct problems -- The SNAP® Under 12 Outreach Project: Service intensity, age and gender effects on short- and long-term outcomes. *Clinical Child Psychology and Psychiatry*, 13(3), 419-434.
- ❑ Lipman, E.L., Kenny, M., Sniderman, C., O’Grady, S., Augimeri, L., Khayutin, S., & Boyle, M.H. (2008). Evaluation of a community-based program for young boys at risk of antisocial behaviour: Results and issues. *Journal of the Canadian Academy of Child and Adolescent Psychiatry*, 17 (1), 12 – 19. <http://www.ncbi.nlm.nih.gov/pubmed/18392161>
- ❑ Lipman, E.L., Kenny, M., Waymouth, M. (2007). *Banyan Community Services Girls Connection Program: Final Evaluation Conducted by Offord Centre for Child.*
- ❑ Granic, I., O’Hara, A., Pepler, D., & Lewis, M. (2007). A dynamic system analysis of parent-child changes associated with successful “real-world” interventions for aggressive children. *J Abnorm Child Psychol*, 35 (5), 845-857. Printed On-Line: DOI 10.1007/s10802-007-9133-4.

SNAP Headquarters at Child Development Institute

46 St. Clair Gardens, Toronto, ON M6E 3V4 T 416.603-1827 x 3112 F 416.654-8996

Contact: Dr. Leena Augimeri, Director, Scientific and Program Development & Centre for Children Committing Offences

E [augimeri@childdevelop.ca](mailto:augimeri@childdevelop.ca) W [www.stopnowandplan.com](http://www.stopnowandplan.com) or [www.childdevelop.ca](http://www.childdevelop.ca)

- ❑ Goldberg, K. & Augimeri, L.K. (2007). Children under the age of criminal responsibility at risk of delinquency. *The Welfare of Canadian Children: It's Our Business*. Ottawa, ON: Child Welfare League of Canada.
- ❑ Augimeri, L.K., Farrington, D.P., Koegl, C.J., & Day, D.M. (2007). The Under 12 Outreach Project: Effects of a community based program for children with conduct problems. *Journal of Child and Family Studies*, 16, 799- 807. Published Online, January 10, 2007. DOI: 10.1007/s10826-006-9126-x
- ❑ Augimeri, L.K., Koegl, C.J., Ferrante, P. & Slater, N. (Fall 2006). Why and how: Conducting effective clinical risk assessments with children with conduct problems. *Canada's Children*, 12 (2), 24 – 27 (English); 28 – 32 (French).
- ❑ Coombs, J. & Levene, K., Augimeri, L.K. (2006). Engaging the Margins: Barriers and Outreach in "Priority" Neighbourhoods. *Qualitative Research Observations, Policy Recommendations*. Ministry of Children & Youth Services; Mental Health Innovation Fund.
- ❑ Augimeri, L.K., Jiang, D., Koegl, C.J. & Carey, J. Differential Effects of the SNAP® Under 12 Outreach Project (SNAP® ORP) Associated with Client Risk & Treatment Intensity (2006). Program Evaluation Report Submitted to the Centre of Excellence for Child and Youth Mental Health at CHEO.
- ❑ Enebrink, P., Långström, N., & Gumpert, C.H. (2006). Predicting aggressive and disruptive behavior in referred 6- to 12-year-old boys: Prospective validation of the EARL-20B Risk/Needs Checklist. *Assessment*, 13, 356-367.
- ❑ Enebrink, P., Långström, N., Hultén, A., & Gumpert, C.H. (2006). Swedish validation of the Early Assessment Risk List for Boys (EARL-20B), a decision-aid for use with children presenting with conduct-disordered behavior. *Nordic Journal of Psychiatry*, 60, 468-446.
- ❑ Augimeri, L.K., Koegl, C.J., Slater, N., & Ferrante P. (2006). Understanding SNAP™ Across Ontario: Toward the Establishment of a SNAP™ Community of Practice. Report submitted to The Provincial Centre of Excellence for Child and Youth Mental Health at CHEO (April 29, 2006).
- ❑ Hrynkiw-Augimeri, L.K. (2005). Aggressive and antisocial young children: Risk prediction, assessment and management utilizing the Early Assessment Risk List for Boys (EARL-20B). Unpublished doctoral dissertation, Ontario Institute for Studies in Education, University of Toronto, Ontario, Canada.
- ❑ Augimeri, L., Couch, R., Koegl, C., Slater, N., Walsh, M. & Webster, C. (2005). Re: Evaluation of a children's temper-taming program. *Canadian Journal of Psychiatry*, 50, 568.
- ❑ Augimeri, L.K., Koegl, C.J., Levene, K.S., Webster, C.D. (2005). Early assessment risk lists for boys and girls. In T. Grisso, G. Vincent, & L. Seagrave (Eds.), *Mental health screening and assessment in juvenile justice* (pp. 295 - 310). New York, N.Y.: Guilford Pub. Inc.
- ❑ Pepler, D.J., Madsen, K., Webster, C.D., & Levene, K.S. (Eds.). (2005). *The development and treatment of girlhood aggression*. Hillsdale, N.J.: Earlbaum.

SNAP Headquarters at Child Development Institute

46 St. Clair Gardens, Toronto, ON M6E 3V4 T 416.603-1827 x 3112 F 416.654-8996

Contact: Dr. Leena Augimeri, Director, Scientific and Program Development & Centre for Children Committing Offences

E [laugimeri@childdevelop.ca](mailto:laugimeri@childdevelop.ca) W [www.stopnowandplan.com](http://www.stopnowandplan.com) or [www.childdevelop.ca](http://www.childdevelop.ca)

- ❑ Levene, K.S., Madsen, K., Pepler, D.J. (2005). Girls growing up angry: A qualitative study. In D.J. Pepler, K. Madsen, C.D. Webster, & K.S. Levene (Eds.), *The development and treatment of girlhood aggression* (pp. 169 – 190). Hillsdale, NJ: Erlbaum.
- ❑ Goldberg, K. (2005). Foreword. In D.J. Pepler, K. Madsen, C.D. Webster, & K.S. Levene (Eds.), *The development and treatment of girlhood aggression*. Hillsdale, N.J.: Erlbaum.
- ❑ Coombs, J. (2005). *Engaging Families in Contact with the Toronto Police Protocol for Under-12 Children in Conflict with the Law: Qualitative Observations and Policy Recommendations*. Ministry of Children & Youth Services; Mental Health Innovation Fund.
- ❑ Goldberg, K., Levene, K.S., & Augimeri, L. (2004). Voices from the Field – A view from one applied clinical setting. In: Temblay RE, Barr RG, Peters RDeV, eds. *Encyclopedia on Early Childhood Development* [online]. Montreal, Quebec: Centre of Excellence for Early Childhood Development; 2004:1-5. Available at: <http://www.excellence-earlychildhood.ca/documents/Goldberg-Levene-AugimeriANG.pdf>.
- ❑ Levene, K.S., Walsh, M.M., Augimeri, L.K., & Pepler, D. (2004). Linking identification and treatment of early risk factors for female delinquency. In M. Moretti, C. Odgers, & M. Jackson (Eds.), *Girls and aggression: Contributing factors and intervention principles: Perspectives in law and psychology (Vol. 19)* (pp. 147-164). New York: Kluwer Academic/Plenum Publishers.
- ❑ Pepler, D.J., Walsh, M.M. & Levene K.S. (2004). Interventions for aggressive girls: Tailoring and measuring the fit. In M. Moretti, C. Odgers, & M. Jackson (Eds.), *Girls and aggression: Contributing factors and intervention principles: Perspectives in law and psychology (Vol. 19)* (pp. 131-146). New York: Kluwer Academic/Plenum Publishers.
- ❑ Augimeri, L.K., Koegl, C.J., & Chanda, S. (2003). Children under age 12 in conflict with the law: The development of police protocol demonstration sites in selected communities in Ontario. Report submitted to the Ontario Ministry of Public Safety and Security. Toronto, ON: Earls court Child and Family Centre.
- ❑ Burns, B.J., Howell, J.C., Wigg, J.K., Augimeri, L.K., Welsh, B.C., Loeber, R. & Petechuk, D. (2003, March). Treatment, services, and intervention programs for child delinquents. *Child Delinquency Bulletin Series*, (pp. 1-15), U.S. Department of Justice.
- ❑ Earls court Child and Family Centre (2002). *SNAP™ girls group manual: The girls club*. Toronto: Earls court Child and Family Centre.
- ❑ Walsh, M.M., Pepler, D.J., & Levene, K.S. (2002). A model intervention for girls with disruptive behaviour problems: The Earls court girls connection. *Canadian Journal of Counselling*, 36, 297-311.
- ❑ Webster, C.D., Augimeri, L.K., & Koegl, C.J. (2002). The under 12 outreach project for antisocial boys: A research based clinical program. In R.R. Corrado, R. Roesch, S.D. Hart , & J.K. Gierowsk. (Eds.), *Multi-problem violent youth: A foundation for comparative research on needs, interventions and outcomes* (pp. 207-218). Amsterdam: IOS Press.

SNAP Headquarters at Child Development Institute

46 St. Clair Gardens, Toronto, ON M6E 3V4 T 416.603-1827 x 3112 F 416.654-8996

Contact: Dr. Leena Augimeri, Director, Scientific and Program Development & Centre for Children Committing Offences

E [augimeri@childdevelop.ca](mailto:augimeri@childdevelop.ca) W [www.stopnowandplan.com](http://www.stopnowandplan.com) or [www.childdevelop.ca](http://www.childdevelop.ca)

- ❑ Augimeri, L.K. (2001). Providing effective supports. In K.S Douglas, C.D. Webster, S.D. Hart, & D. Eaves (Eds.), *HCR-20: Violence risk management companion guide*. British Columbia: Simon Fraser University, Mental Health, Law, & Policy Institute.
- ❑ Enebrink, P., Långström, N., Neij, J., Grann, M., & Gumpert, C.H. (2001). *Brief report: Interrater reliability of the early assessment risk list: EARL-20B: A new guide for clinical evaluation of conduct-disordered boys*. Huddinge, Sweden: Karolinska Institutet.
- ❑ Augimeri, L.K., Koegl, C.J., & Goldberg, K. (2001). Children under 12 years who commit offenses: Canadian legal and treatment approaches. In R. Loeber & D.P. Farrington (Eds.), *Child delinquents: Development, intervention, and service needs* (pp. 405-414). Thousand Oaks: Sage Publications, Inc.
- ❑ Augimeri, L. K., Koegl, C.J., Webster, & Levene, K. (2001). *Early assessment risk list for boys: EARL-20B, Version 2*. Toronto, ON: Earls court Child and Family Centre.
- ❑ Levene, K.S., Augimeri, L.K., Pepler, D.J., Walsh, M.M., Koegl, C.J., Webster C.D. (2001). *Early assessment risk list for girls: EARL-21G, Version 1, Consultation Edition*. Toronto, ON: Earls court Child and Family Centre.
- ❑ *SNAP Children's group manual*. (1990, 2001) Toronto, ON: Earls court Child and Family Centre.
- ❑ *SNAP Parent group manual*. (1990, 2001) Toronto, ON: Earls court Child and Family Centre.
- ❑ Koegl, C.J., Webster, C.D., Michel, M., & Augimeri, L.K. (2000). Coding raw data: Towards understanding raw life. *Child & Youth Care Forum*, 29 (4), 229-246.
- ❑ Koegl, C.J., Augimeri, L.K., & Caddell, J. (2000). *Children under 12 in conflict with the law: An evaluation of the Toronto centralized services protocol in conjunction with the Toronto police service*. Report submitted to the Ontario Ministry of the Solicitor General. Toronto, ON: Earls court Child and Family Centre.
- ❑ Augimeri, L., Goldberg, K., & Koegl, C. (1999). *Canadian children under 12 committing offences: Police protocols*. Toronto, ON: Earls court Child and Family Centre.
- ❑ Augimeri, L., & Koegl, C.J. (1999, Fall). A multi-agency police protocol to improve service delivery for children under 12 committing offences. *Canada's Children*, 21-24.
- ❑ Goldberg, K. (1999, Fall). An alternative to criminalization. *Canada's Children*, 6-10.
- ❑ Goldberg, K., Augimeri, L., Koegl, C., & Webster, C. (1999). *Canadian children under 12 committing offences: Legal and treatment approaches*. Toronto, ON: Earls court Child and Family Centre.
- ❑ Augimeri, L., Webster, C.D., Koegl, C., & Levene, K. (1998). *Early assessment risk list for boys: EARL-20B, Version 1, Consultation Edition*. Toronto, ON: Earls court Child and Family Centre.

SNAP Headquarters at Child Development Institute

46 St. Clair Gardens, Toronto, ON M6E 3V4 T 416.603-1827 x 3112 F 416.654-8996

Contact: Dr. Leena Augimeri, Director, Scientific and Program Development & Centre for Children Committing Offences

E [laugimeri@childdevelop.ca](mailto:laugimeri@childdevelop.ca) W [www.stopnowandplan.com](http://www.stopnowandplan.com) or [www.childdevelop.ca](http://www.childdevelop.ca)

- ❑ Hrynkiw-Augimeri, L.K. (1998). Assessing risk for violence in boys: A preliminary risk assessment study using the Early Assessment Risk List for Boys (EARL-20B). Unpublished master's thesis, Ontario Institute for Studies in Education, University of Toronto, Ontario, Canada.
- ❑ Day, D.M. (1998). Risk for court contact and predictors of an early age for a first court contact among a sample of high risk youths: A survival analysis approach. *Canadian Journal of Criminology*, 412-446.
- ❑ Levene, K. (1998, Spring). Behaviour problems: Issues for girls and their families. *Ontario Association of Parents for Children's Mental Health Newsletter*, 4-5.
- ❑ Levene, K. (1998, Spring). Girls' issues: Growing up angry. *Ontario Association of Social Work Newsmagazine*, 1.
- ❑ Levene, K. (1998). *SNAPP Stop-now-and-plan-parenting: Parenting children with behaviour problems*. Toronto, ON: Earls court Child and Family Centre.
- ❑ Day, D.M. (1997). Long-term follow-up of court contact and criminal behavior among two samples of youth at risk for juvenile delinquency. Report submitted to the Trillium Foundation. Toronto, ON: Earls court Child and Family Centre.
- ❑ Day, D.M., & Golench, C.A. (1997). Promoting safe schools through policy: Results of a survey of Canadian school boards. *Journal of Educational Administration*, 35 (4), 332-347.
- ❑ Levene, K. (1997). The Earls court girls connection: A model for intervention. *Canada's Children*, 4, 14-17.
- ❑ Day, D. M., & Augimeri, L.A. (1996). Serving children at risk for juvenile delinquency: An evaluation of the Earls court under 12 outreach project (ORP). Report submitted to the Department of Justice. Toronto, ON: Earls court Child and Family Centre.
- ❑ Day, D.M., & Hunt, A.C. (1996). A multivariate assessment of a risk model for juvenile delinquency with an "under 12 offender" sample. *Journal of Emotional and Behavioural Disorders*, 4, 66-72.
- ❑ Pepler, D.J., Craig, W., & Roberts, W.L. (1995). Social skills training and aggression in the peer group. In J. McCord (Ed.), *Coercion and punishment in long term perspectives* (pp. 213-228). Cambridge: Cambridge University press.
- ❑ Pepler, D.J., King, G., Craig, W., Byrd, B., & Bream, L. (1995). The development and evaluation of a multi-system social skills group training program for aggressive children. *Child and Youth Care Forum*, 24, 297-313.
- ❑ Baines, C.T. (1994). The children of Earls court, 1915-1948. "All In the same boat: Except we were in a better boat". *Canadian Social Work Review*, 11 (2), 184-200.
- ❑ Day, D.M., Pal, A., & Goldberg, K. (1994). Assessing the post-residential functioning of latency-aged conduct disordered children. *Residential Treatment for Children & Youth*, 11, 45-61.

SNAP Headquarters at Child Development Institute

46 St. Clair Gardens, Toronto, ON M6E 3V4 T 416.603-1827 x 3112 F 416.654-8996

Contact: Dr. Leena Augimeri, Director, Scientific and Program Development & Centre for Children Committing Offences

E [laugimeri@childdevelop.ca](mailto:laugimeri@childdevelop.ca) W [www.stopnowandplan.com](http://www.stopnowandplan.com) or [www.childdevelop.ca](http://www.childdevelop.ca)



- ❑ Day, D.M., Factor, D.C., & Szkiba-Day, P.J. (1994). Relations among discipline style, child behaviour problems, and perceived ineffectiveness as a caregiver among parents with conduct problem children. *Canadian Journal of Behavioural Science*, 26, 520-533.
- ❑ Goldberg, K., Stein, L., & Gaber, S. (1994). Children in diverse families. *The Social Worker*, 62, 58-60.
- ❑ Day, D.M., Carey, J., Hunt, A.C., MacLoed, J., & Pal, A. (1993). Letter to the editor: Risk and protective factors. *Journal of the American Academy of Child and Adolescent Psychiatry*, 32, 1304-1305.
- ❑ Hrynkiw-Augimeri, L., Pepler, D., & Goldberg, K. (1993). An outreach program for children having police contact. *Canada's Mental Health*, 41, 7-12.
- ❑ Pepler, D.J., & Lessa, I. (1993). The mental health of Portuguese children. *Canadian Journal of Psychiatry*, 38, 46-50.
- ❑ Day, D.M., Bream, L.A., & Pal, A. (1992). Proactive and reactive aggression: An analysis of subtypes based on teacher perceptions. *Journal of Clinical Child Psychology*, 21, 210-217.
- ❑ Day, D.M. (1991). Parent management training. *Youth Update*, 9, 4-5.
- ❑ Goldberg, K. (1991). Family experiences of residential treatment. *Journal of Child and Youth Care*, 6, 1-6.
- ❑ Goldberg, K. (1991). Foreword. In D.J. Pepler & K.H. Rubin (Eds.), *The development and treatment of childhood aggression*. Hillsdale, N.J.: Erlbaum.
- ❑ Pepler, D.J., King, G., & Byrd, W. (1991). A social-cognitively based social skills training programme for aggressive children. In D.J. Pepler & K.H. Rubin (Eds.), *The development and treatment of childhood aggression* (pp. 361-379). Hillsdale, N.J.: Erlbaum.
- ❑ Pepler, D.J., & Rubin, K.H. (1991). (Eds.), *The development and treatment of childhood aggression*. Hillsdale, NJ: Erlbaum.
- ❑ Moore, T., Pepler, D., Weinberg, B., Hammond, L., Waddell, J., & Weiser, L. (1990). Research on children from violent families. *Canada's Mental Health*, 38, 19-23.
- ❑ Pepler, D.J., & Craig, W.M. (1990). School-based skills training with aggressive children: Necessary, but not sufficient? *Exceptionality Education Canada, Special Edition: Teaching Social Skills in School*, 3, 177-194.
- ❑ Kates, M., & Pepler, D. (1989). A reception classroom for children of battered women in emergency shelter. *Canada's Mental Health*, 37, 7-10.
- ❑ Goldberg, K. (1982). Home based help: A new approach to helping families with problems in raising their children. *Reaction*. Toronto, ON: Canadian Mental Health Association.

SNAP Headquarters at Child Development Institute

46 St. Clair Gardens, Toronto, ON M6E 3V4 T 416.603-1827 x 3112 F 416.654-8996

Contact: Dr. Leena Augimeri, Director, Scientific and Program Development & Centre for Children Committing Offences

E [laugimeri@childdevelop.ca](mailto:laugimeri@childdevelop.ca) W [www.stopnowandplan.com](http://www.stopnowandplan.com) or [www.childdevelop.ca](http://www.childdevelop.ca)

- Goldberg, K., & Dooner, M. (1981). Rethinking residential treatment. *Child Welfare*, 60, 355-358.
- 

For additional information related to our SNAP Boys and Girls models:

- Centre for Children Committing Offences (CCCO) Annual Highlight Report(s)
- EARL Information
- SNAP Information (e.g., Creating Change with SNAP, SNAP Booklets – SNAP, Lying, Stealing, Bullying, Tips for Troubled Times, Sibling Rivalry – Brothers and Sisters Learn SNAP)
- Program Brochure(s)
- Police-Community Referral Protocol Information
- SNAP Resource Kit Order Form (Kit contains a set of SNAP booklets, the EARL-20B and EARL-21G risk assessment tools, SNAP Boys and Girls program manuals, and the SNAP and Stopping Stealing videos)

SNAP Headquarters at Child Development Institute

46 St. Clair Gardens, Toronto, ON M6E 3V4 T 416.603-1827 x 3112 F 416.654-8996

Contact: Dr. Leena Augimeri, Director, Scientific and Program Development & Centre for Children Committing Offences

E [laugimeri@childdevelop.ca](mailto:laugimeri@childdevelop.ca) W [www.stopnowandplan.com](http://www.stopnowandplan.com) or [www.childdevelop.ca](http://www.childdevelop.ca)